

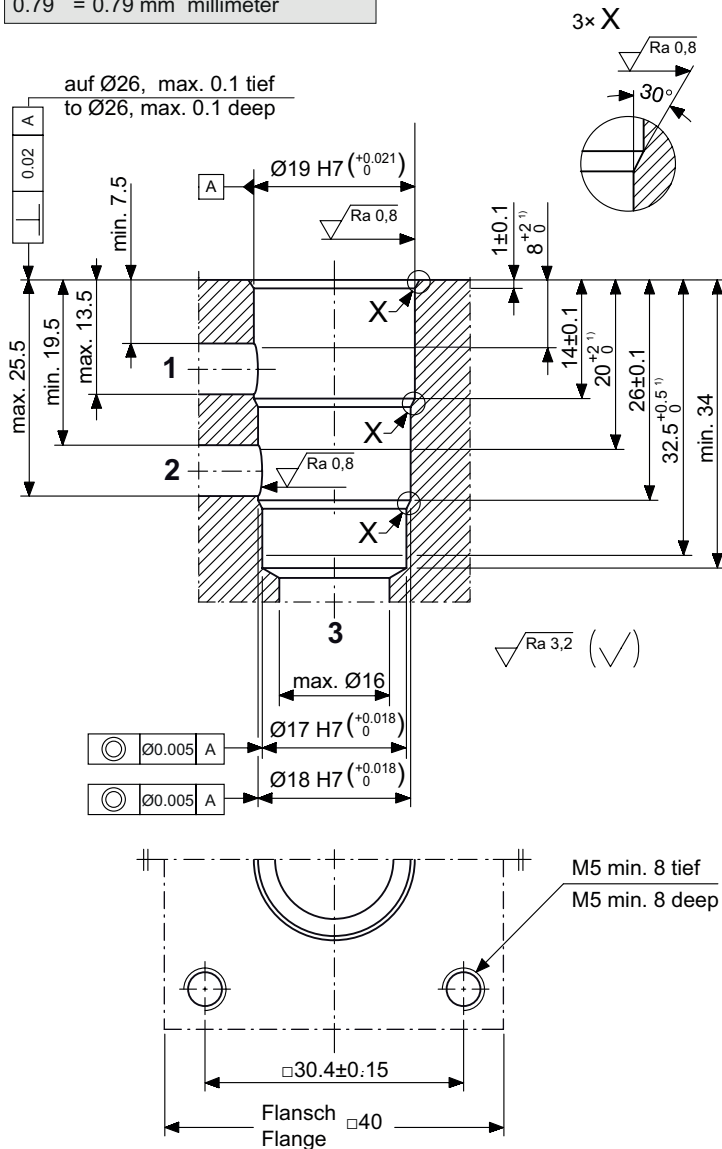
# General information

## Cavity

Type series: AC

Dimensions and sectional view

**Beispiel für die Masseinheit:**  
**Example for the dimensional units:**  
0.79 = 0.79 mm millimeter



**HINWEIS!**  
**NOTE!**

<sup>1)</sup> Passungstiefe  
Minimum depth of specified diametral tolerance

## Installation information



### **ATTENTION!**

You must maintain the specified positional and diametral tolerances. To ensure trouble-free operation of the screw-in cartridges, we strongly recommend that pilot drilling, boring, reaming and cavity thread-cutting are always performed in one setup.



### **NOTE!**

We offer form tool sets for sale or hire. For further information, see data sheet 400-P-040011.